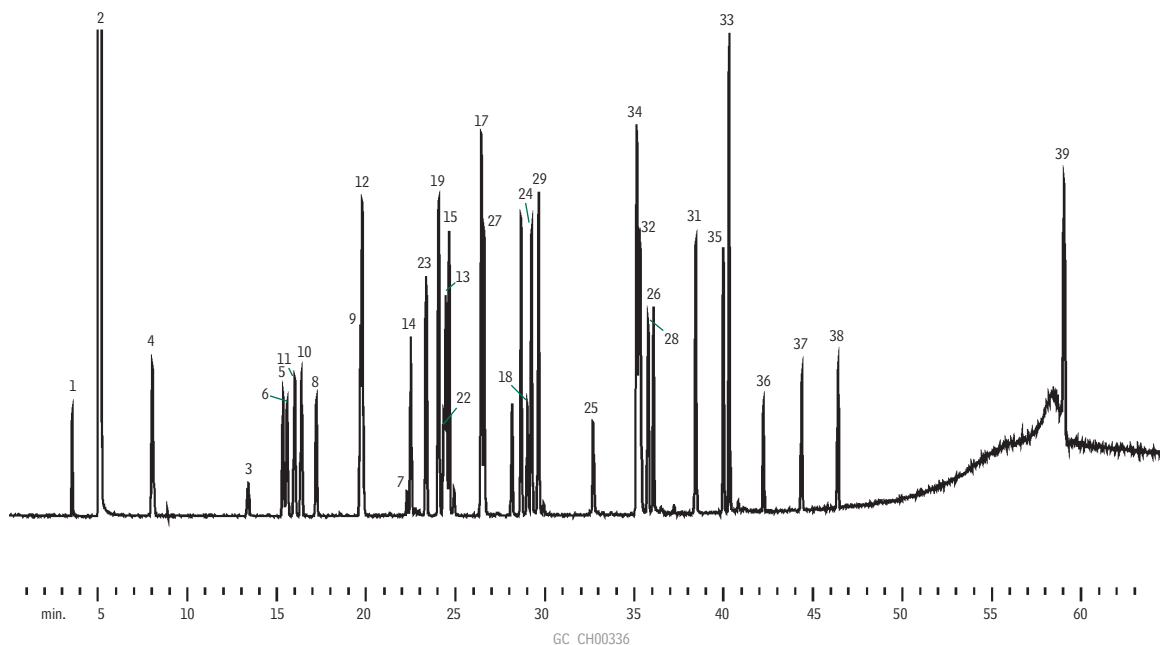


Solvent Mixture #1
Rtx®-200



1. pentane	27. dodecane	53. 2,6-dimethyl-4-heptanone	79. cyclopentanone
2. methylene chloride	28. undecanal	54. 2-octanone	80. 2-hexanol
3. ethylene glycol	29. tridecane	55. <i>o</i> -cresol	81. butyl acetate
4. heptane	30. —	56. α -methylbenzyl alcohol	82. 2-ethyl-1-butanol
5. cyclopentanol	31. dodecanal	57. 5-nonanone	83. 3-ethyl-3-pentanol
6. 3-hexanol	32. dicyclohexylamine	58. nonanal	84. 1,4-dichlorobutane
7. acetamide	33. bis(2,2-methoxy)ethyl ether	59. decanal	85. 2-methyl-2,4-pentanediol
8. 2-methyl-1-pentanol	34. pentadecane	60. —	86. butoxyethanol
9. furfuryl alcohol	35. heptadecane	61. 1-decanol	87. 1,2,3-trichloropropane
10. butyl ether	36. octadecane	62. 1-undecanol	88. 1,4-butanediol
11. nonane	37. nonadecane	63. 2-dodecanone	89. methyl hexanoate
12. cumene	38. eicosane	64. 1-dodecanol	90. 1,2,4-trimethylbenzene
13. ethyl amyl ketone	39. acetyl tributyl citrate	65. tetraethylene glycol	91. 2-ethyl-1-hexanol
14. heptanol	40. 2-buten-1-ol	66. dibenzyl	92. dipentene/limonene
15. butyl butanoate	41. formamide	67. diethyl phthalate	93. tetrahydrofurfuryl acetate
16. —	42. 3-pentanol	68. tributyl phosphate	94. —
17. benzyl alcohol	43. 1-nitropropane	69. diphenyl sulfone	95. decahydronaphthalene
18. dipropylene glycol	44. dimethylformamide	70. allyl alcohol	96. —
19. diethylbenzene	45. 2-methyl-3-pentanol	71. —	97. —
20. —	46. toluene	72. isopropyl acetate	98. 2-decanol
21. —	47. ethyl chloroacetate	73. benzene	99. 1,2-bis(2-methoxyethoxy)ethane
22. hexachloroethane	48. dimethylacetamide	74. 2-nitropropane	100. 2-phenoxyethanol
23. undecane	49. <i>p</i> -xylene	75. nitroethane	101. —
24. 1-nonanol	50. <i>sec</i> -tetrachloroethane	76. pentanal	102. benzyl ether
25. <i>p</i> -methoxyphenol	51. benzaldehyde	77. 2-bromobutane	
26. triethylene glycol	52. <i>o</i> -chlorotoluene	78. 1-chloropentane	

60m, 0.53mm ID, 3.0 μ m Rtx®-200 (cat.# 15088)
1.0 μ L split injection of solvent mix #1.

Oven temp.: 40°C (hold 5 min.) to 285°C @ 5°C/min.
Inj. / det. temp.: 275°C / 285°C
MSD: TIC mode
Carrier gas: helium
Linear velocity: 40cm/sec.
Split vent: 50mL/min.