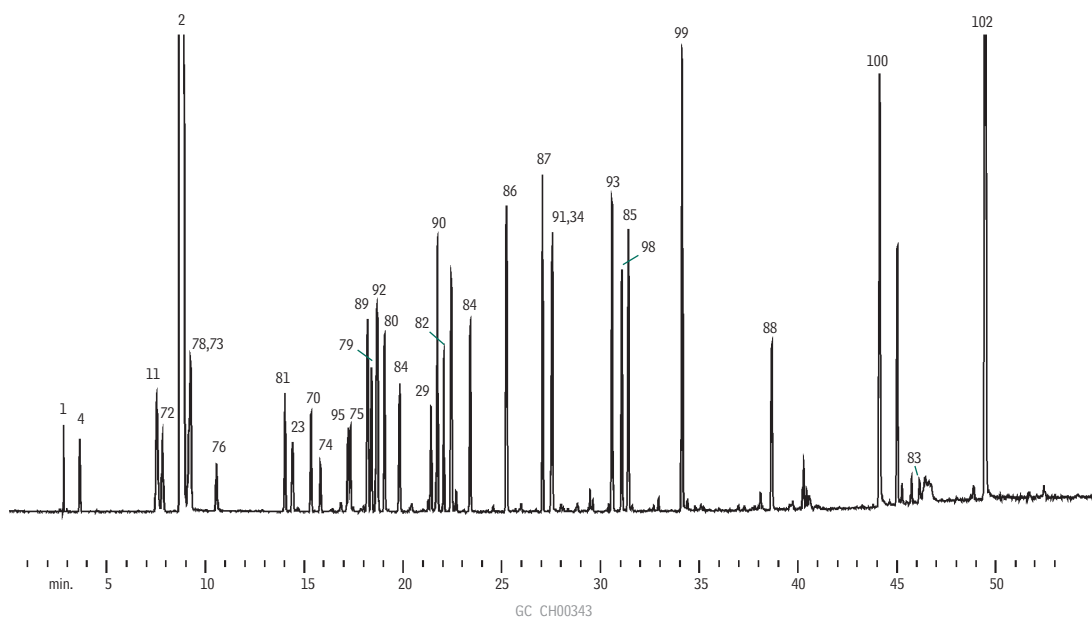


Solvent Mixture #3
Stabilwax®



- | | | | |
|-----------------------------|-----------------------------------|------------------------------------|------------------------------------|
| 1. pentane | 27. dodecane | 53. 2,6-dimethyl-4-heptanone | 79. cyclopentanone |
| 2. methylene chloride | 28. undecanal | 54. 2-octanone | 80. 2-hexanol |
| 3. ethylene glycol | 29. tridecane | 55. <i>o</i> -cresol | 81. butyl acetate |
| 4. heptane | 30. — | 56. α -methylbenzyl alcohol | 82. 2-ethyl-1-butanol |
| 5. cyclopentanol | 31. dodecanal | 57. 5-nonanone | 83. 3-ethyl-3-pentanol |
| 6. 3-hexanol | 32. dicyclohexylamine | 58. nonanal | 84. 1,4-dichlorobutane |
| 7. acetamide | 33. bis(2,2-methoxy)ethyl ether | 59. decanal | 85. 2-methyl-2,4-pentanediol |
| 8. 2-methyl-1-pentanol | 34. pentadecane | 60. — | 86. butoxyethanol |
| 9. furfuryl alcohol | 35. heptadecane | 61. 1-decanol | 87. 1,2,3-trichloropropane |
| 10. butyl ether | 36. octadecane | 62. 1-undecanol | 88. 1,4-butanediol |
| 11. nonane | 37. nonadecane | 63. 2-dodecanone | 89. methyl hexanoate |
| 12. cumene | 38. eicosane | 64. 1-dodecanol | 90. 1,2,4-trimethylbenzene |
| 13. ethyl amyl ketone | 39. acetyl tributyl citrate | 65. tetraethylene glycol | 91. 2-ethyl-1-hexanol |
| 14. heptanol | 40. 2-buten-1-ol | 66. dibenzyl | 92. dipentene/limonene |
| 15. butyl butanoate | 41. formamide | 67. diethyl phthalate | 93. tetrahydrofurfuryl acetate |
| 16. — | 42. 3-pentanol | 68. tributyl phosphate | 94. — |
| 17. benzyl alcohol | 43. 1-nitropropane | 69. diphenyl sulfone | 95. decahydronaphthalene |
| 18. dipropylene glycol | 44. dimethylformamide | 70. allyl alcohol | 96. — |
| 19. diethylbenzene | 45. 2-methyl-3-pentanol | 71. — | 97. — |
| 20. — | 46. toluene | 72. isopropyl acetate | 98. 2-decanol |
| 21. — | 47. ethyl chloroacetate | 73. benzene | 99. 1,2-bis(2-methoxyethoxy)ethane |
| 22. hexachloroethane | 48. dimethylacetamide | 74. 2-nitropropane | 100. 2-phenoxyethanol |
| 23. undecane | 49. <i>p</i> -xylene | 75. nitroethane | 101. — |
| 24. 1-nonanol | 50. <i>sec</i> -tetrachloroethane | 76. pentanal | 102. benzyl ether |
| 25. <i>p</i> -methoxyphenol | 51. benzaldehyde | 77. 2-bromobutane | |
| 26. triethylene glycol | 52. <i>o</i> -chlorotoluene | 78. 1-chloropentane | |

60m, 0.53mm ID, 1.0 μ m Stabilwax® (cat.# 10658)
 1.0 μ L split injection of solvent mix #3

Oven temp.: 40°C (hold 5 min.) to 250°C @ 5°C/min.
 Inj. / det. temp.: 275°C / 285°C
 MS: full scan
 Carrier gas: helium
 Linear velocity: 40cm/sec.
 Split vent: 50mL/min.