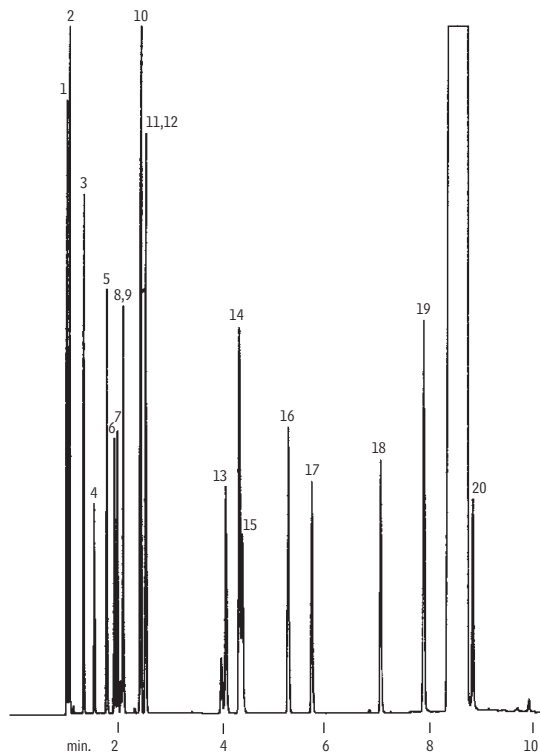


## Solvents Stabilwax®



GC\_CH00345

30m, 0.25mm ID, 0.25 $\mu$ m Stabilwax® (cat.# 10623)  
0.5 $\mu$ L split injection of a solvent mixture

Oven temp.: 40°C (hold 4 min.) to 250°C @ 5°C/min.  
Inj. & det. temp.: 250°C  
Carrier gas: hydrogen  
Linear velocity: 40cm/sec. (flow rate: 3.2cc/min.)  
FID sensitivity: 16 x 10<sup>-11</sup> AFS  
Split ratio: 40:1

1. pentane
2. hexane
3. methyl formate
4. acetone
5. tetrahydrofuran
6. 1,1,1-trichloroethane
7. ethyl acetate
8. methyl ethyl ketone
9. methanol
10. methylene chloride
11. chloroform
12. benzene
13. *n*-propyl alcohol
14. toluene
15. *sec*-butyl alcohol
16. *n*-butyl acetate
17. isobutyl alcohol
18. *n*-butyl alcohol
19. *o*-xylene
20. ethoxyethane