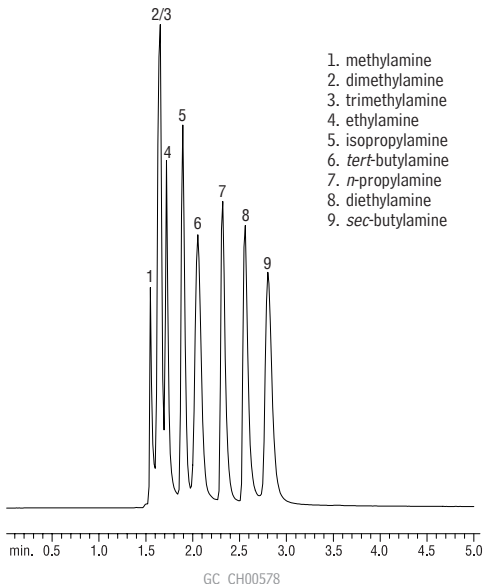


# Primary Amines

## Rtx®-35 Amine



1. methylamine
2. dimethylamine
3. trimethylamine
4. ethylamine
5. isopropylamine
6. *tert*-butylamine
7. *n*-propylamine
8. diethylamine
9. *sec*-butylamine

Rtx®-35 Amine 30m, 0.53mm ID, 1.0 $\mu$ m (cat.# 11355)

Sample: primary amines, 50ppm on-column conc. in water  
Inj.: 1.0 $\mu$ L, split (10:1), 4mm base-deactivated single  
gooseneck (cat.# 20798-210.1)

Injector: 250°C

Carrier gas: helium, constant pressure

Linear velocity: 35.7cm/sec

Oven temp.: 35°C (hold 5.0 min.)

Det.: FID @ 300°C

Restek Corporation 110 Benner Circle Bellefonte, PA 16823  
814-353-1300 • 800-356-1688 • Fax: 814-353-1309 • www.restek.com