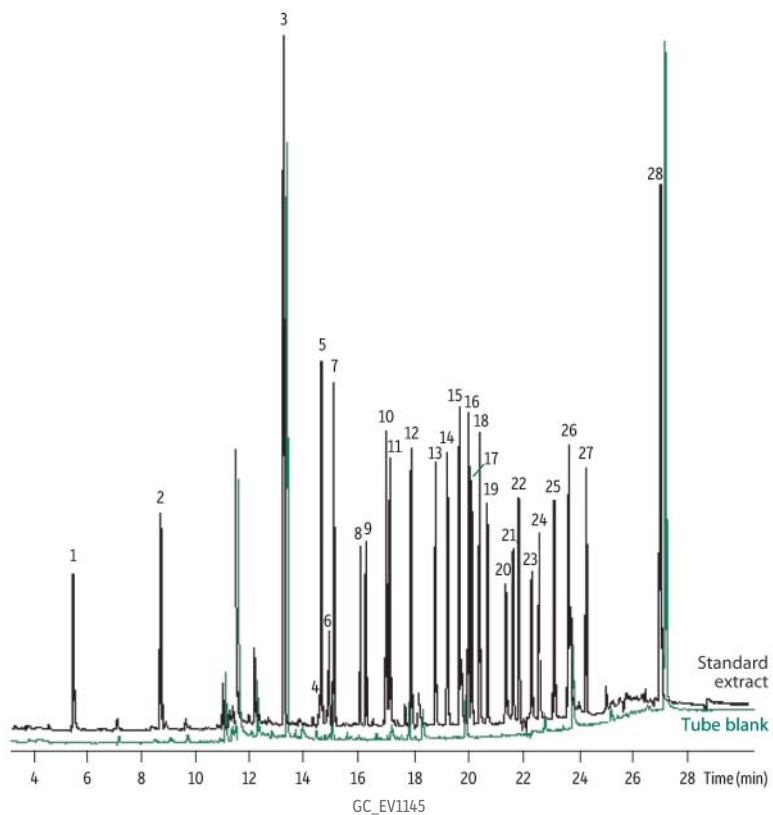


**Method 8081B Chlorinated Pesticides  
Rtx®-CLPesticides2**



Peaks	Peaks
1. Dibromochloropropane	15. <i>trans</i> -Chlordane*
2. Hexachlorocyclopentadiene	16. <i>cis</i> -Chlordane*
3. Tetrachloro- <i>m</i> -xylene	17. Endosulfan I
4. <i>cis</i> -diallate	18. 4,4'-DDE
5. Hexachlorobenzene	19. Dieldrin
6. <i>trans</i> -diallate	20. Endrin/chlorobenzilate
7. $\alpha$ -BHC	21. 4,4'-DDD
8. $\gamma$ -BHC	22. Endosulfan II
9. $\beta$ -BHC	23. 4,4'-DDT
10. $\delta$ -BHC	24. Endrin aldehyde
11. Heptachlor	25. Endosulfan sulfate
12. Aldrin	26. Methoxychlor
13. Isodrin	27. Endrin ketone
14. Heptachlor epoxide	28. Decachlorobiphenyl

\* For information regarding the nomenclature used for *cis*-chlordane and *trans*-chlordane, visit [www.restek.com/chlordane-notice](http://www.restek.com/chlordane-notice)

**Column** Rtx®-CLPesticides2, 30 m, 0.32 mm ID, 0.25  $\mu$ m (cat.# 11324)

**Sample** Organochlorine Pesticide Mix AB #1 (cat.# 32291)  
Pesticide Surrogate Mix, EPA 8080, 8081 (cat.# 32000)  
Organochlorine Pesticide Mix C #1 (cat.# 32296)

**Diluent:** hexane

**Injection** Direct

**Liner:** Drilled Uniliner®

**Inj. Temp.:** 220 °C

**Oven**

Oven Temp: 80 °C (hold 1 min) to 300 °C at 9 °C/min (hold 10 min)

**Carrier Gas** He

**Detector** ECD @ 310 °C

**Notes** *Sample:* 0.5 - 1.0 mL solvent extracted sample exchanged into hexane

Standards and surrogates were spiked into hexane

*Tube:* 3 mL, 250 mg CarboPrep™ 90

*Tube conditioning:* Apply 2 mL CH<sub>2</sub>Cl<sub>2</sub>:hexane (20:80) and pass through tube

*Extract cleanup:* Prepare collection rack with vials, place under each tube.

Add 0.5 - 1.0 mL of extracted sample to tube and collect all solutions passing

through. Do not expose carbon bed to air. Add 20 mL of CH<sub>2</sub>Cl<sub>2</sub>:hexane

(20:80) to tube and allow it to elute using gravity feed.

*Extract concentration:* Solvent exchange extract to hexane

Do not allow extracts to dry completely

Concentrate extract to 0.5 - 1.0 mL

Sample is ready for analysis.