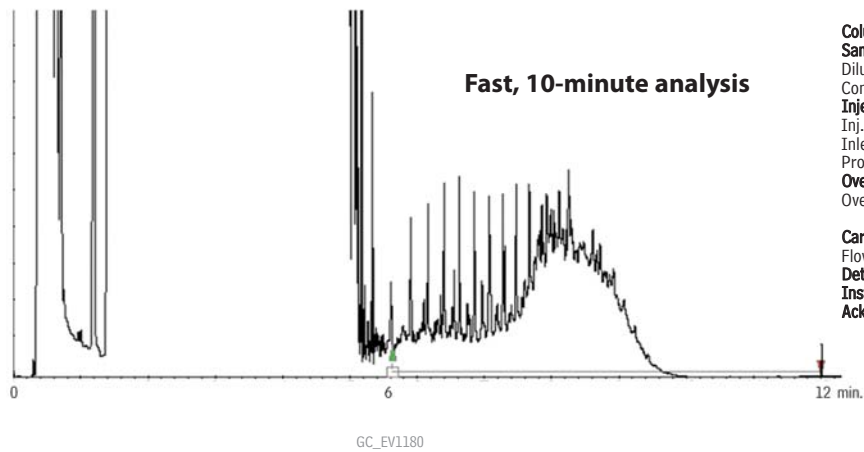


Mineral Oil on Rxi®-5HT by EN9377-2 (PTV large volume injection)



Column Rxi®-5HT, 15 m, 0.32 mm ID, 0.10 μ m (cat.# 13906)
Sample Mineral oil
Diluent: Hexane
Conc.: 25 ppm
Injection
Inj. Vol.: 100 μ L ptv splitless
Inlet Temp.
Program: 45°C (hold 0.45 min.) to 350°C at 200°C/min. (hold 10 min.)
Oven
Oven Temp: 35 °C (hold 4 min.) to 150 °C at 60 °C/min. to 250 °C at 50 °C/min. to 350 °C at 30 °C/min.
Carrier Gas He, constant flow
Flow Rate: 2 mL/min.
Detector FID @ 360 °C
Instrument Varian 450
Acknowledgement Ambiente Analisi S.r.L, Italy