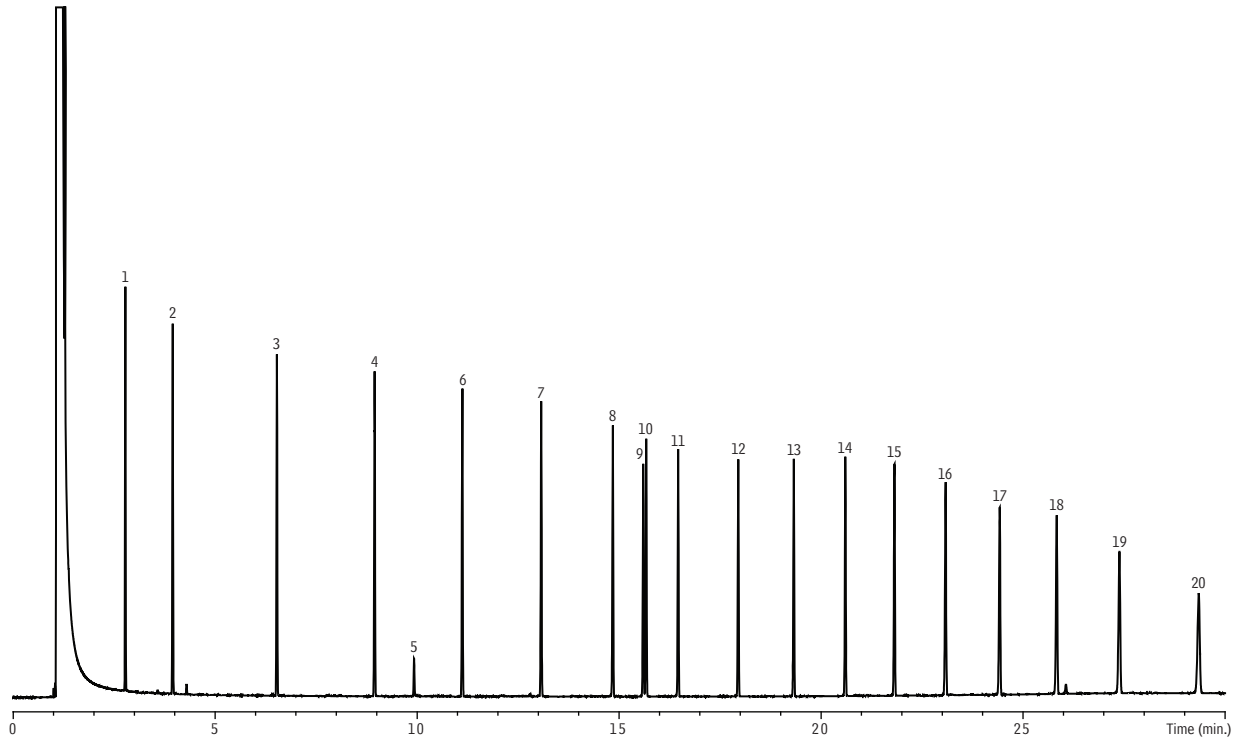


NJDEP EPH Aliphatics on Rtx®-5



GC_EV1208

<p>Peaks</p> <ol style="list-style-type: none"> 1. C9 2. C10 3. C12 4. C14 5. 2-Fluorobiphenyl 6. C16 7. C18 8. C20 9. Chlorooctadecane 10. C21 11. C22 12. C24 13. C26 14. C28 15. C30 16. C32 17. C34 18. C36 19. C38 20. C40 	<p>Column Sample</p> <p>Rtx®-5, 30 m, 0.32 mm ID, 0.25 µm (cat.# 10224) NJDEP EPH 10/08 Rev.2 Aliphatics (cat.# 30540) NJDEP EPH 10/08 Rev.2 Aromatics (cat.# 30541) MA EPH Surrogate Spike Mix (cat.# 31479) MA Fractionation Surrogate Spike Mix (cat.# 31480)</p> <p>Diluent: Hexane</p> <p>Conc.: 200 ppm</p> <p>Injection Inj. Vol.: 1 µL splitless (hold 1.5min) Liner: Gooseneck Splitless (4mm) w/Wool (cat.# 22406) Inj. Temp.: 280 °C Purge Flow: 40 mL/min.</p> <p>Oven Oven Temp.: 60 °C (hold 1 min.) to 300 °C at 12 °C/min. to 330 °C at 6 °C (hold 2 min.)</p> <p>Carrier Gas He, constant pressure (18 psi, 124.1 kPa)</p> <p>Temp.: 60 °C</p> <p>Detector FID @ 330 °C</p> <p>Make-up Gas Flow Rate: 40 mL/min.</p> <p>Make-up Gas Type: N₂</p> <p>Instrument HP5890 GC</p> <p>Notes A fractionation calibration check standard for the NJDEP EPH method was prepared and fractionated according to the method. See chromatogram GC_EV1209 for aromatic fraction.</p>
--	--