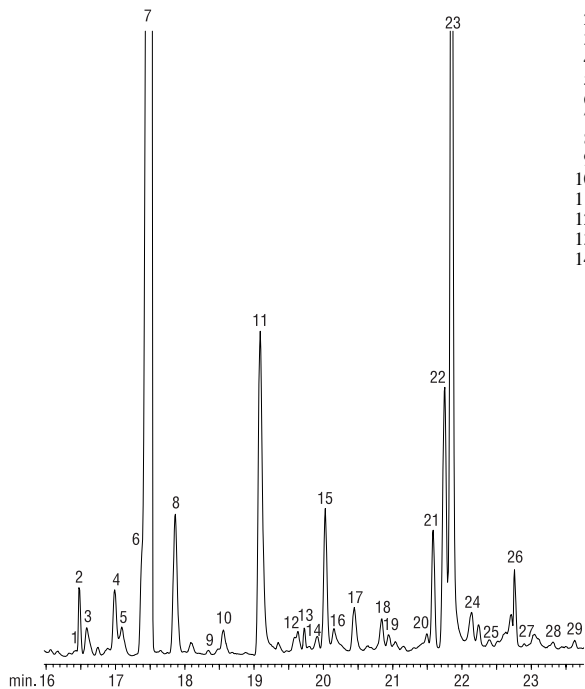


Flavor Compounds in Malt Whiskey Stabilwax®-DA



GC_FF00556

- | | |
|---|-------------------------------------|
| 1. di(ethyleneglycol) butyl ether | 15. whiskey lactone (2) |
| 2. siloxane | 16. dodecanol |
| 3. methyl dodecanoate | 17. unknown |
| 4. phenylethyl acetate | 18. phenol |
| 5. methylcyclopentenolone | 19. methyl tetradecanoate |
| 6. hexanoic acid | 20. nerolidol |
| 7. ethyl dodecanoate | 21. diethyl malate |
| 8. isoamyl decanoate + guaiacol | 22. ethyl tetradecanoate |
| 9. dodecyl acetate (possible) | 23. octanoic acid |
| 10. whiskey lactone (1) | 24. unknown |
| 11. 2-phenylethanol | 25. <i>p</i> -cresol |
| 12. heptanoic acid | 26. siloxane |
| 13. siloxane | 27. diethyl octanedioate |
| 14. dimethoxybenzene or
4-methylguaiacol | 28. monomethyl succinate |
| | 29. 3,5-dimethyl-2,4(5H) furandione |

Stabilwax®-DA 30m, 0.18mm ID, 0.18µm (cat.# 550752)

Inj.: 10µL large volume injection (splitless), at
10µL/min.

Std. conc.: neat

Gerstel CIS Injector: 35°C (hold 2 min.), to 300°C @ 10°C/sec.
(hold 5 min.)

Helium vent flow: 600mL/min with 1.8 min. vent end time

Carrier gas: helium

Linear velocity: 45cm/sec.

Oven temp.: 60°C (hold 2 min.) to 100°C @ 20°C/min.,
to 240°C @ 5°C/min. (hold 10 min.)

Det.: MSD

Transfer line temp.: 240°C

Quadrupole temp.: 150°C

MS source temp.: 230°C

Scan range: 30–400amu

Ionization: 70eV

Mode: EI

*Chromatogram courtesy of Kevin MacNamara, Ph.D.,
Irish Distilleries, Ltd.*