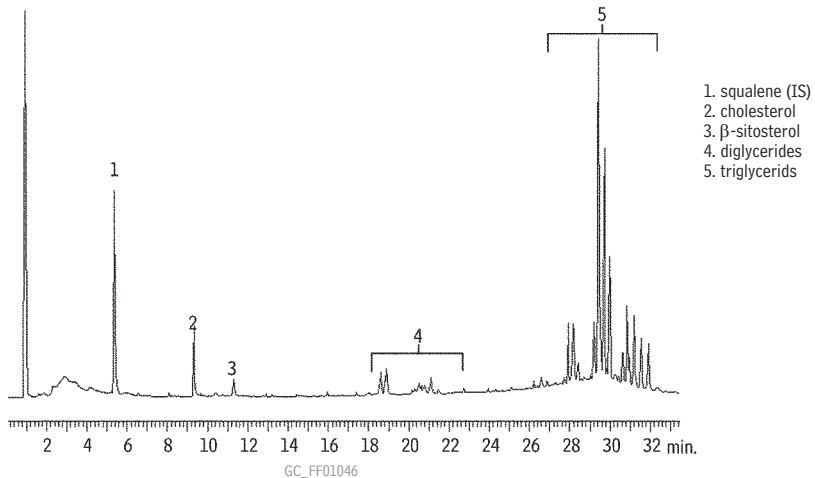


## Egg Pasta: Sterols & Glycerides Rtx®-65TG



Column: Rtx®-65TG, 30m, 0.25mm ID, 0.10 $\mu$ m (cat.# 17008)  
Sample: 50 $\mu$ g/mL fat extract from egg pasta in diethyl ether solution with 3,000ppm squalene (IS)  
Inj.: 0.5 $\mu$ L, split (1:80), 70°C (hold 12 sec.) at 99°C up to 370°C (hold 5 min.)  
Carrier gas: hydrogen  
Flow rate: 1.5mL/min.  
Oven temp.: 220°C (hold 2.0 min.) to 360°C @ 5°C/min. (hold 5 min.)  
Det: FID @ 370°C