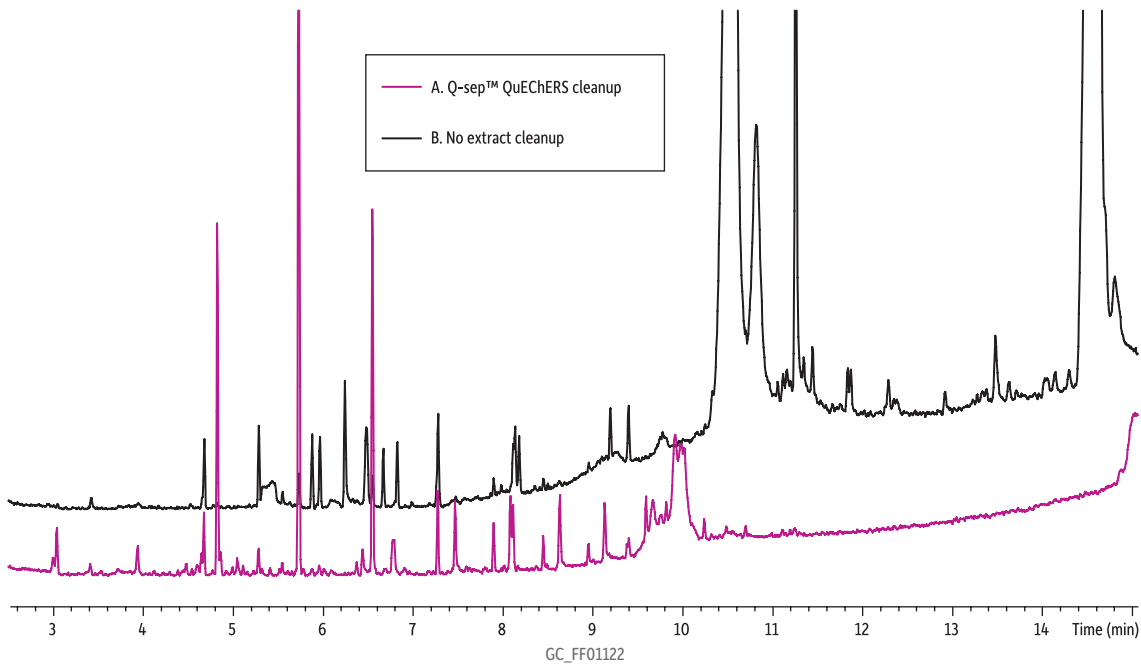
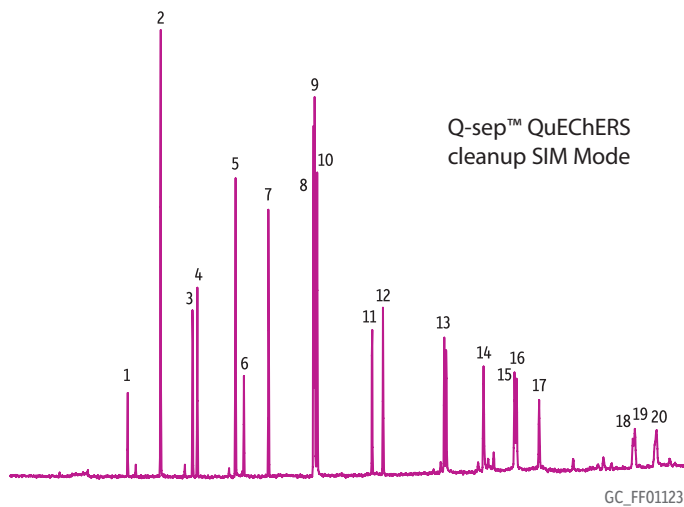


**Polycyclic Aromatic Hydrocarbons Infant Formula
With and Without QuEChERS dSPE Cleanup
Rxi®-5Sil MS**



Compound list and ions monitored (SIM mode)

Peaks	m/z
1. Decafluorobiphenyl (SS)	265
2. Naphthalene	128
3. 2-Methylnaphthalene	142
4. 1-Methylnaphthalene	142
5. Acenaphthylene	152
6. Acenaphthene	152
7. Fluorene	166
8. Phenanthrene-d10 (IS)	188
9. Phenanthrene	178
10. Anthracene	178
11. Fluoranthene	202
12. Pyrene	202
13. Benzo[a]anthracene	228
14. Chrysene	228
15. Benzo[b]fluoranthene	252
16. Benzo[k]fluoranthene	252
17. Benzo[a]pyrene	252
18. Indeno[1,2,3-cd]pyrene	276
19. Dibenzo[a,h]anthracene	278
20. Benzo[ghi]perylene	276



Q-sep™ QuEChERS
cleanup SIM Mode

Column Rxi®-5Sil MS, 30 m, 0.25 mm ID, 0.25 µm (cat.# 13623)
Sample Liquid infant formula spiked with: (see details below)
Decafluorobiphenyl (cat.# 31842)
EPA Method 8310 PAH Mixture (cat.# 31841)
Phenanthrene-d10 (cat.# 31045)

Injection
Inj. Vol.: 1 µL splitless (hold 0.15 min)
Liner: 3.5 mm Gooseneck splitless w/wool (cat.# 22286-200.1)
Inj. Temp.: 300 °C

Oven
Oven Temp: 50 °C (hold 0.5 min) to 290 °C at 25 °C/min to 320 °C
at 5 °C/min (hold 5 min)

Carrier Gas He, constant flow
Flow Rate: 1.4 mL/min

Detector MS
Mode: Scan
Transfer Line Temp.: 290 °C
Analyzer Type: Quadrupole
Ionization Mode: EI
Scan Range: 100-350 amu
Instrument Shimadzu 2010 GC & QP2010+ MS
Notes

Sample Details:
Liquid infant formula spiked at 1 µg/mL with decafluorobiphenyl (cat.# 31842) and EPA Method 8310 PAH mixture (cat.# 31841) and at 0.5 µg/mL with internal standard phenanthrene-d10 (cat.# 31045), then extracted with acetonitrile and Q-sep™ QuEChERS extraction salts.

A. Extract with cleanup using Q-sep™ QuEChERS dSPE cleanup tube (cat.# 26215)
B. Extract without dSPE clean-up