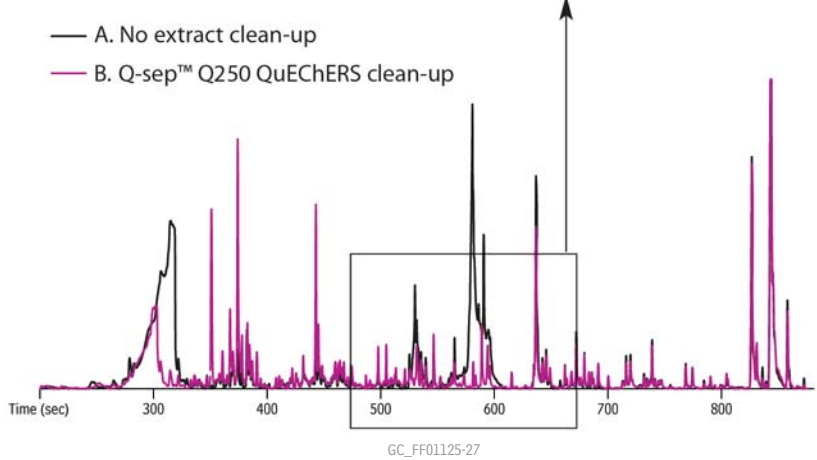
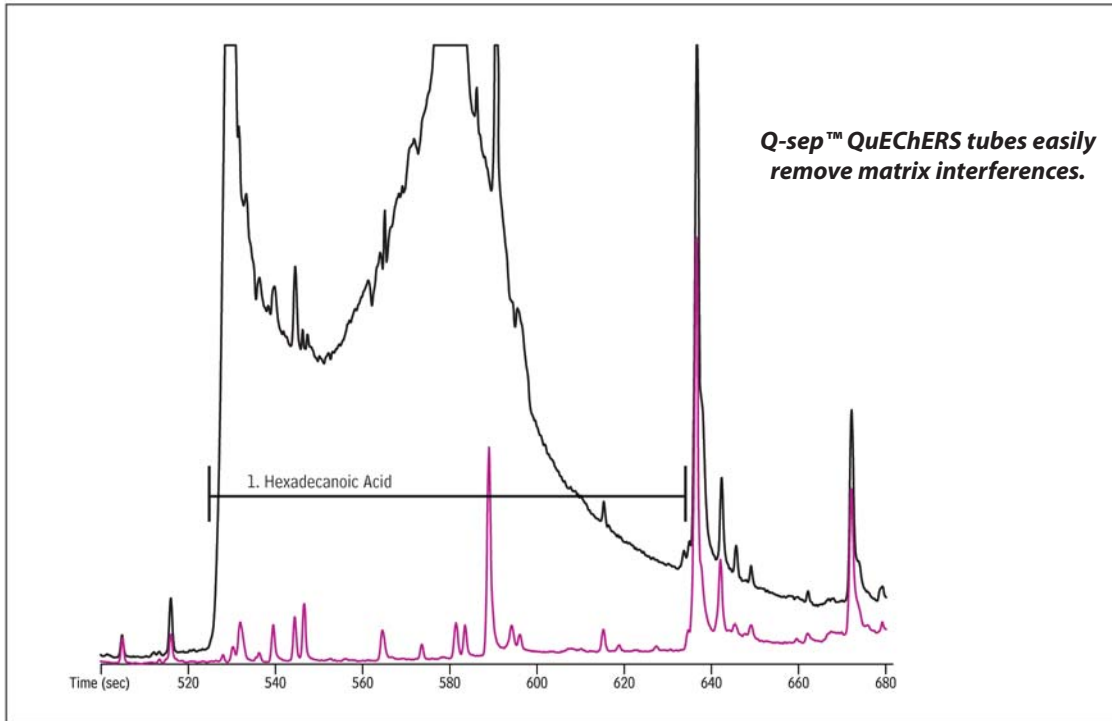


**Pesticides on Sweet Potato with and without QuEChERS dSPE Clean-up**  
**Rxi®-5Sil MS**



Column: Rxi®-5Sil MS, 20m, 0.18mm ID, 0.18µm (cat.# 43602)  
 Sample: sweet potato spiked with pesticide mix, extracted with acetonitrile and Q-sep™ Q110 QuEChERS extraction tube (cat.# 26213)  
 A. extract (without clean-up step) acidified with formic acid to pH 5  
 B. extract with clean-up using Q-sep™ Q250 QuEChERS dSPE clean-up tube (cat.# 26124), acidified with formic acid to pH 5  
 Inj.: 1.0µL splitless (hold 1 min.), 4mm single gooseneck liner with w/wool (cat.# 22405)  
 Inj. temp.: 250°C  
 Carrier gas: helium, constant flow  
 Flow rate: 1.2mL/min.  
 Oven temp.: 72.5°C (hold 1 min.) to 350°C @ 20°C/min.  
 Det: tof MS  
 Transfer line temp.: 225°C  
 Scan range: 45-550amu, m/z 60, 73, 87, 129, 256 plotted  
 Ionization: EI  
 Mode: tof  
 Instrument: Agilent 6890, LECO Pegasus III