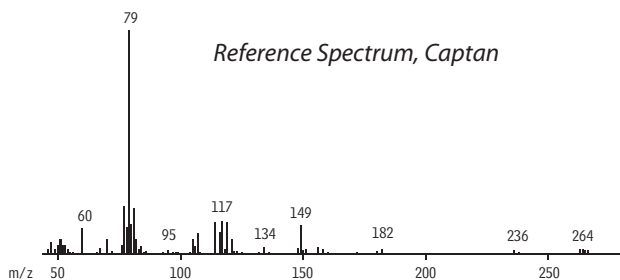
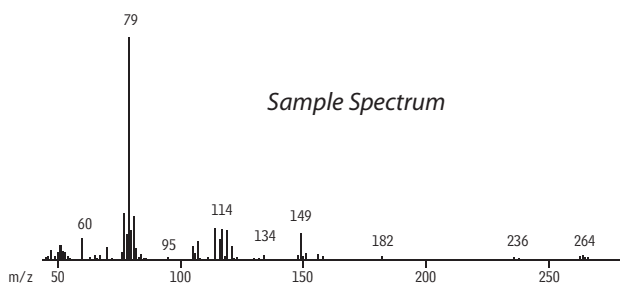
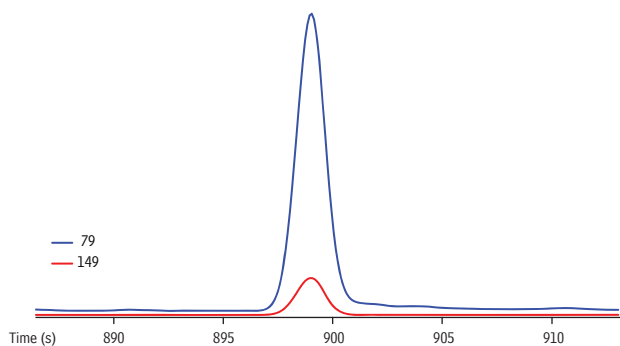
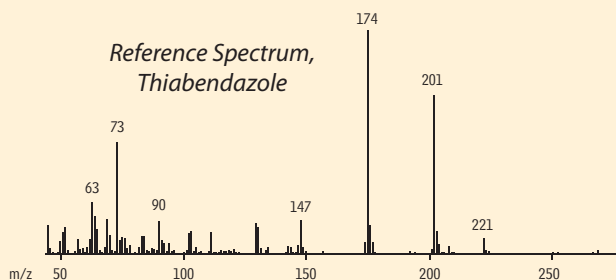
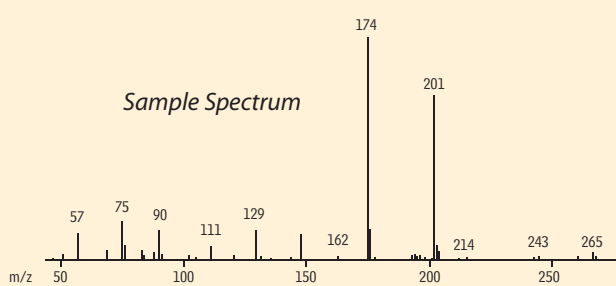
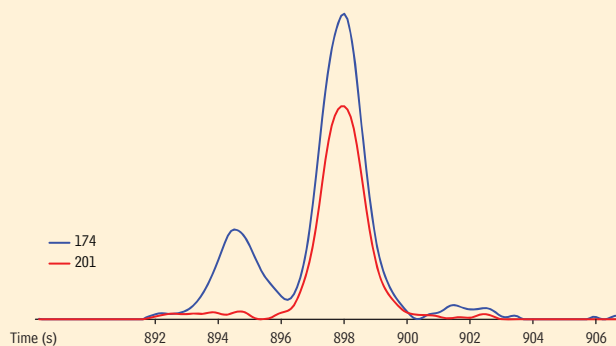


Extracted Ion Chromatograms and Spectra for Incurred Pesticides in Strawberries on Rxi®-5Sil MS

Captan in Store-Bought Strawberries



Thiabendazole in Amish Strawberries



GC_FF1201

Column Sample

Rxi®-5Sil MS, 30 m, 0.25 mm ID, 0.25 μ m (cat.# 13623)
Strawberries processed with QuEChERS sample preparation QuEChERS Internal Standard Mix for GC/MS Analysis (cat.# 33267), anthracene for quality control (cat.# 33264) acetonitrile
captan incurred in store bought strawberries at 1,400 ppb and thiabendazole incurred in Amish strawberries at about 10 ppb

Diluent:
Conc.:

Injection

Inj. Vol.: 1 μ L splitless (hold 1.5 min.)
Liner: 5mm Splitless with wool (cat.# 22975-200.1)
Inj. Temp.: 250 °C

Oven

Oven Temp: 90 °C (hold 1.5 min.) to 340 °C at 10 °C/min.

Carrier Gas

He, constant flow

Flow Rate: 2 mL/min.

Detector

Mode:

Analyzer Type: TOF

Source Temp.: 225 °C

Electron Energy: 70 eV

Ionization Mode: EI

Acquisition Range: 45-550

Spectral Acquisition Rate: 5 spectra/sec

Instrument

LECO Pegasus 4D GCxGC-TOFMS

Notes

Sample Preparation:

Sample: 10 g of homogenized strawberries, either Amish or store bought, and QuEChERS Internal Standard Mix for GC/MS Analysis (cat.# 33267)

Extraction: 10 mL acetonitrile added, 1 minute shake, then addition of Q-sep™ Q110 (cat.# 26235), 1 minute shake, centrifuge with Q-sep™ 3000 Centrifuge (cat.# 26230).

dSPE: cleanup procedure according to EN 15662 method, add control standard anthracene (cat.# 33264) to 1 mL extract, add this to Q-sep™ Q210 dSPE tubes (cat.# 26215), shake, centrifuge.

Analysis: extracted ion chromatograms of m/z 79 and 149 for captan and m/z 174 and 201 for thiabendazole.