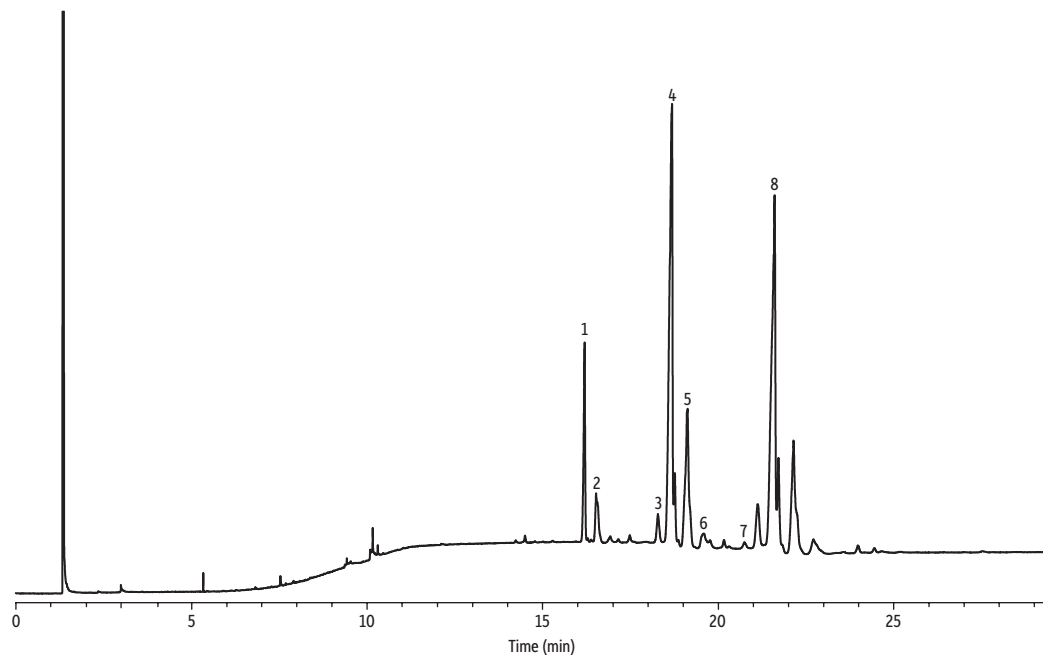


Extra Virgin Olive Oil on Rxi-65TG



GC_FF1293

Peaks	tr (min)	Column
1. 1,3-Palmitin-2-olein (POP)	16.196	Rxi-65TG, 30 m, 0.25 mm ID, 0.1 µm (cat.# 17108)
2. 1,2-Palmitin-3-linolein (PPL)	16.530	Extra virgin olive oil
3. 1-Palmitin-2-olein-3-stearin (POS)	18.287	Conc.: ~50 mg of extra virgin olive oil was diluted to 10 mL with isooctane.
4. 1,2-Olein-3-palmitin (POO)	18.687	Injection
5. 1-Palmitin-2-linolein-3-olein (PLO)	19.133	Inj. Vol.: 1 µL split (split ratio 35:1)
6. 1,2-Linolein-3-palmitin (PLL)	19.593	Liner: Topaz 4.0 mm ID Precision inlet liner w/wool (cat.# 23305)
7. 1,2-Stearin-3-olein (SOS)	20.747	Inj. Temp.: 360 °C
8. Triolein (OOO)	21.612	Split Vent
		Flow Rate: 35 mL/min
		Oven
		Oven Temp.: 200 °C (hold 1 min) to 350 °C at 20 °C/min to 365 °C at 1 °C/min (hold 6 min)
		Carrier Gas: H ₂ , constant flow
		Flow Rate: 1 mL/min
		Detector
		Make-up Gas: FID @ 365 °C
		Flow Rate: 30 mL/min
		Make-up Gas
		Type: N ₂
		Hydrogen flow: 40 mL/min
		Air flow: 370 mL/min
		Data Rate: 50 Hz
		Instrument
		Agilent 7890B GC