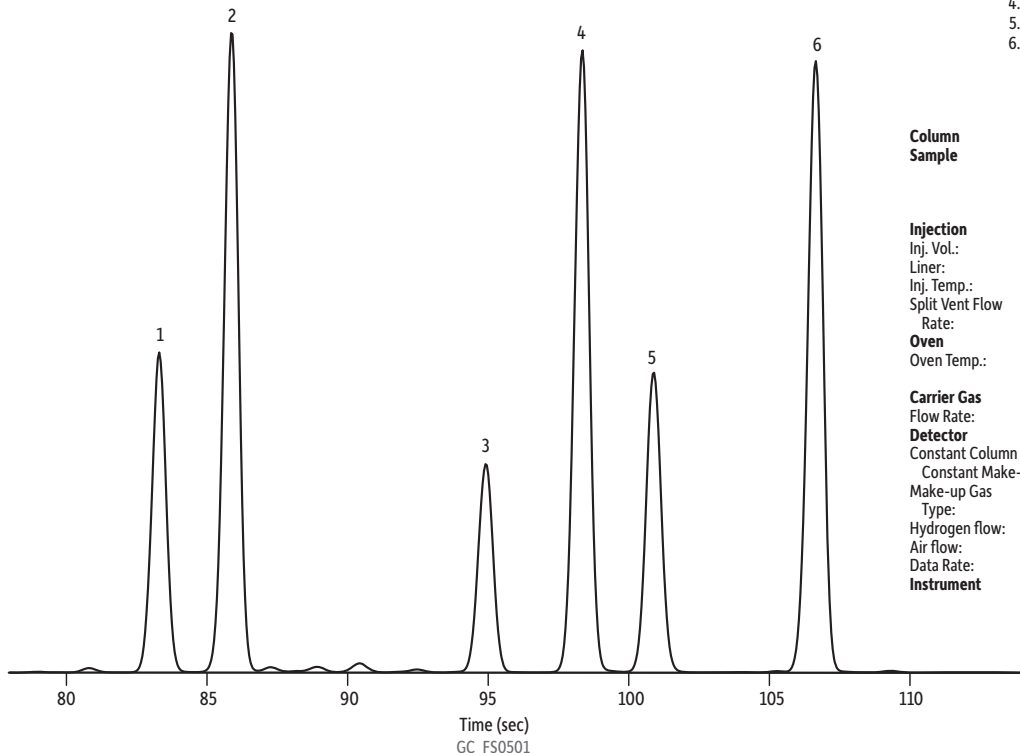


Cannabinoids on Rxi®-35Sil MS Using Hydrogen Carrier Gas by GC-FID



Peaks	t_R (sec)
1. Cannabichromene	83.3
2. Cannabidiol	85.9
3. Delta-8-Tetrahydrocannabinol	94.9
4. Delta-9-Tetrahydrocannabinol	98.4
5. Cannabigerol	100.9
6. Cannabinol	106.7

Column Rxi®-35Sil MS, 15 m, 0.25 mm ID, 0.25 μ m (cat.# 13820)
Sample Cannabinoids standard (cat.# 34014)

Cannabichromene (cat.# 34092)
delta-8-Tetrahydrocannabinol (THC) (cat.# 34090)
Cannabigerol (cat.# 34091)

Injection

Inj. Vol.: 1 μ L split (split ratio 50:1)
Liner: Premium 4 mm Precision® liner w/wool (cat.# 23305.5)
Inj. Temp.: 250 °C

Split Vent Flow

Rate: 125 mL/min

Oven

Oven Temp.: 225 °C (hold 0.1 min) to 330 °C at 35 °C/min
(hold 0.9 min)

Carrier Gas

Flow Rate: H₂, constant flow
2.5 mL/min

Detector

FID @ 350 °C

Constant Column +

Constant Make-up: 50 mL/min

Make-up Gas

Type: N₂

Hydrogen flow: 40 mL/min

Air flow: 450 mL/min

Data Rate: 20 Hz

Instrument

Agilent/HP6890 GC