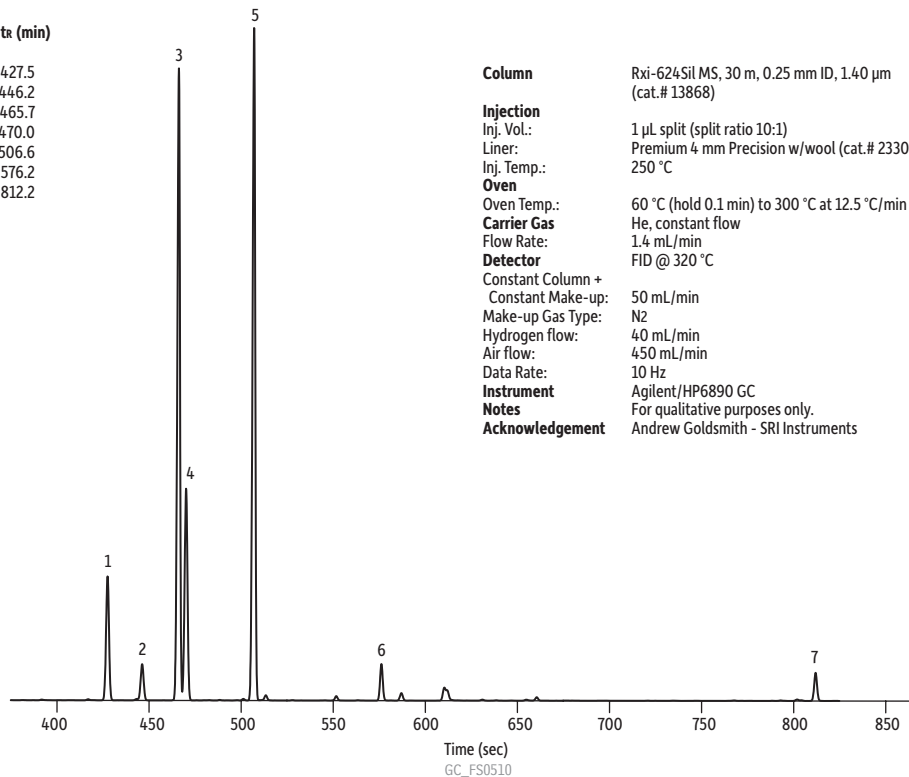


## Terpenes in Kryptonite Cannabis on Rxi-624Sil MS

Peaks	t <sub>R</sub> (min)
1. alpha-Pinene	427.5
2. Camphene	446.2
3. Myrcene	465.7
4. beta-Pinene	470.0
5. Limonene	506.6
6. Linalool	576.2
7. beta-Caryophyllene	812.2



**Column** Rxi-624Sil MS, 30 m, 0.25 mm ID, 1.40  $\mu$ m (cat.# 13868)

**Injection**  
Inj. Vol.: 1  $\mu$ L split (split ratio 10:1)  
Liner: Premium 4 mm Precision w/wool (cat.# 23305.5)  
Inj. Temp.: 250 °C

**Oven**  
Oven Temp.: 60 °C (hold 0.1 min) to 300 °C at 12.5 °C/min (hold 1.7 min)

**Carrier Gas**  
Carrier Gas: He, constant flow  
Flow Rate: 1.4 mL/min

**Detector**  
Detector: FID @ 320 °C

Constant Column +  
Constant Make-up: 50 mL/min

Make-up Gas Type: N<sub>2</sub>

Hydrogen flow: 40 mL/min  
Air flow: 450 mL/min  
Data Rate: 10 Hz

**Instrument**  
Instrument: Agilent/HP6890 GC

**Notes**  
Notes: For qualitative purposes only.

**Acknowledgement**  
Acknowledgement: Andrew Goldsmith - SRI Instruments

