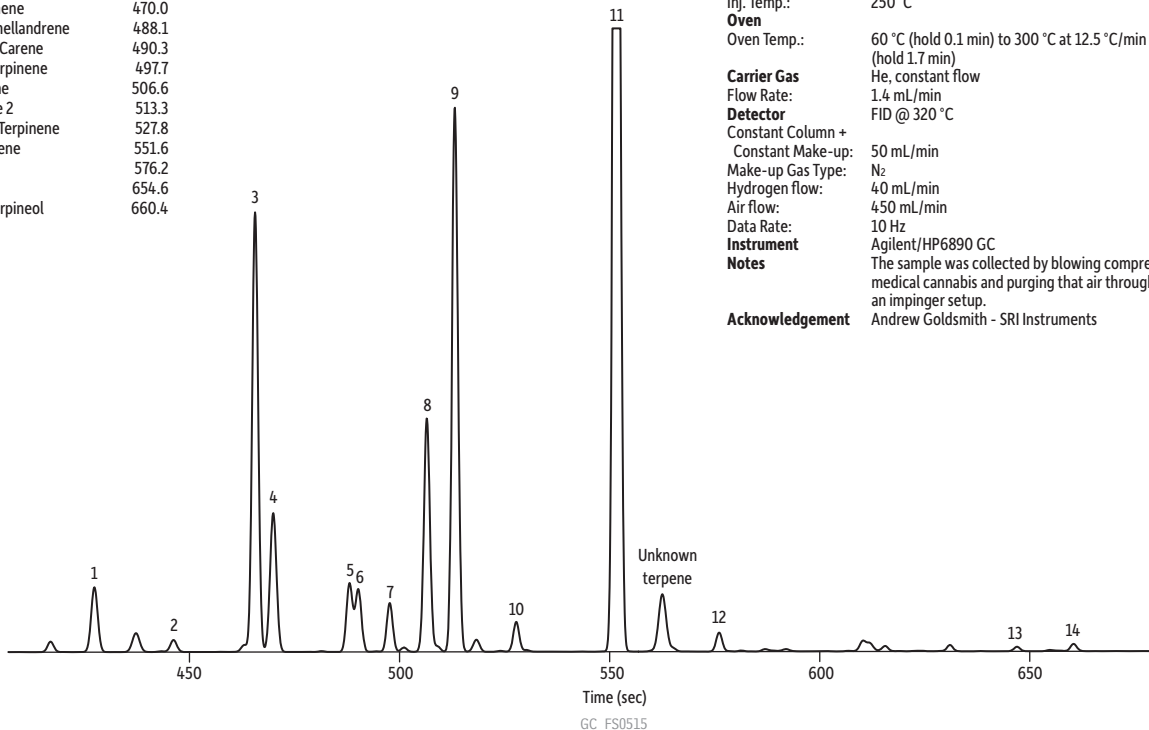


Terpenes in Blueberry Jack Medical Cannabis on Rxi®-624Sil MS

Peaks	t_R (min)
1. alpha-Pinene	427.5
2. Camphene	446.2
3. Myrcene	465.7
4. beta-Pinene	470.0
5. alpha-Phellandrene	488.1
6. delta-3-Carene	490.3
7. alpha-Terpinene	497.7
8. Limonene	506.6
9. Ocimene 2	513.3
10. gamma-Terpinene	527.8
11. Terpinolene	551.6
12. Linalool	576.2
13. Borneol	654.6
14. alpha-Terpineol	660.4



Column Rxi®-624Sil MS, 30 m, 0.25 mm ID, 1.40 μ m (cat.# 13868)

Injection
Inj. Vol.: 1 μ L split (split ratio 10:1)
Liner: Premium 4 mm Precision w/wool (cat.# 23305.5)
Inj. Temp.: 250 °C

Oven
Oven Temp.: 60 °C (hold 0.1 min) to 300 °C at 12.5 °C/min (hold 1.7 min)

Carrier Gas He, constant flow

Flow Rate: 1.4 mL/min

Detector FID @ 320 °C

Constant Column +

Constant Make-up: 50 mL/min

Make-up Gas Type: N₂

Hydrogen flow: 40 mL/min

Air flow: 450 mL/min

Data Rate: 10 Hz

Instrument Agilent/HP6890 GC

Notes

The sample was collected by blowing compressed air over medical cannabis and purging that air through methanol via an impinger setup.

Acknowledgement Andrew Goldsmith - SRI Instruments