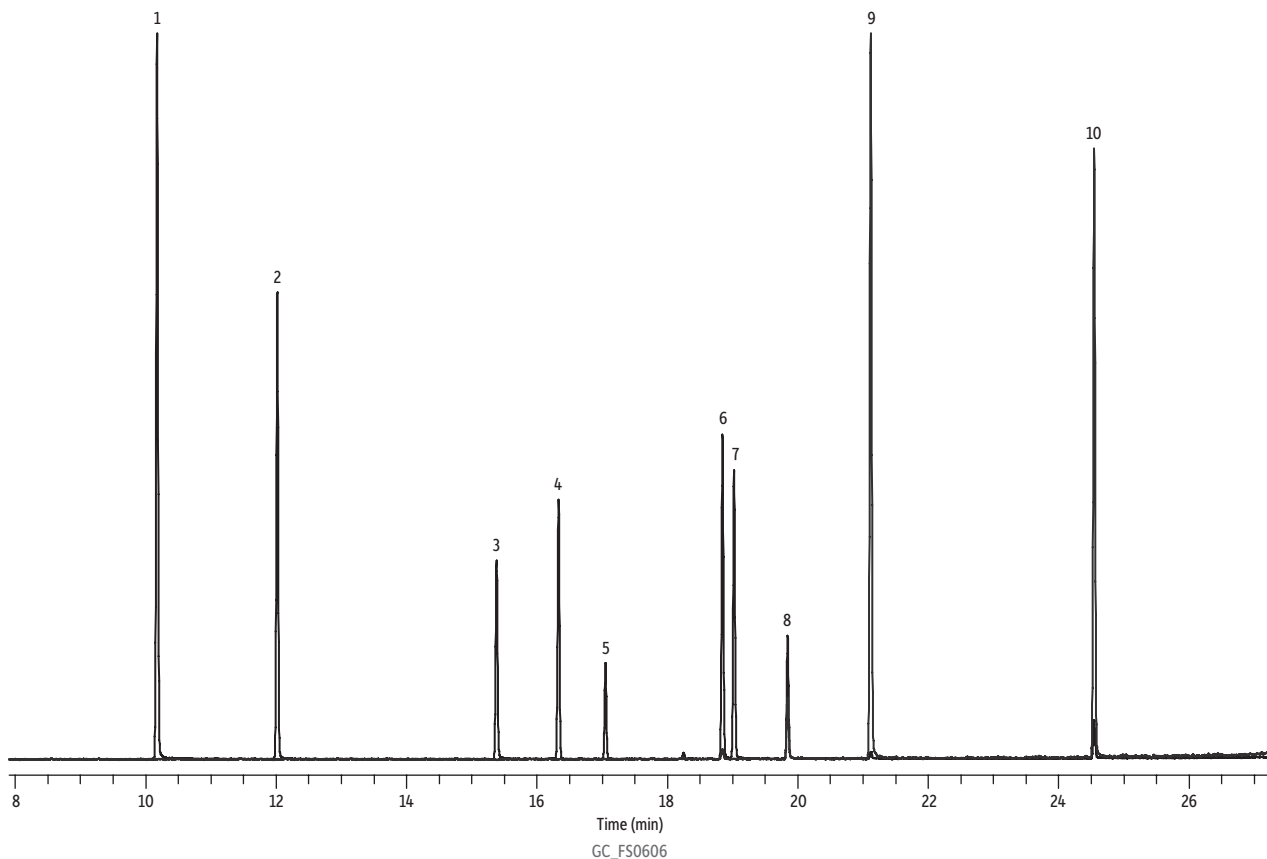


GC Multiresidue Pesticide Standard #7-HME on Rxi®-5ms by GC-MS

Peaks	tr (min)
1. 2-Phenylphenol	10.17
2. Chlorpropham	12.02
3. Metalaxyl	15.38
4. DCPA methyl ester (Chlorthal-dimethyl)	16.33
5. Chlozolinate	17.05
6. Fluazifop-P-butyl	18.84
7. Chlorobenzilate	19.02
8. Carfentrazone ethyl	19.84
9. Bromopropylate	21.12
10. Acequinocyl	24.54



Column Rxi®-5ms, 30 m, 0.25 mm ID, 0.25 µm (cat.# 13423)
Sample GC multiresidue pesticide standard #7-HME (cat.# 32569)
Diluent: Toluene
Conc.: 100 µg/mL
Injection
Inj. Vol.: 1 µL split (split ratio 50:1)
Liner: Premium 4.0 mm ID Precision® inlet liner w/wool (cat.# 23305.1)
Inj. Temp.: 250 °C
Oven
Oven Temp.: 90 °C (hold 1 min) to 330 °C at 8.5 °C/min (hold 5 min)
Carrier Gas He, constant flow
Flow Rate: 1.4 mL/min
Detector MS
Mode: Scan

Scan Program:

Group	Start Time (min)	Scan Range (amu)	Scan Rate (scans/sec)
1	5	55-550	7

Transfer Line
Temp.: 290 °C
Analyzer Type: Quadrupole
Source Temp.: 325 °C
Electron Energy: 70 eV
Solvent Delay
Time: 5 min
Ionization Mode: EI
Instrument Thermo Scientific TSQ 8000 Triple Quadrupole GC-MS
Notes Reconstructed chromatogram from select ions.