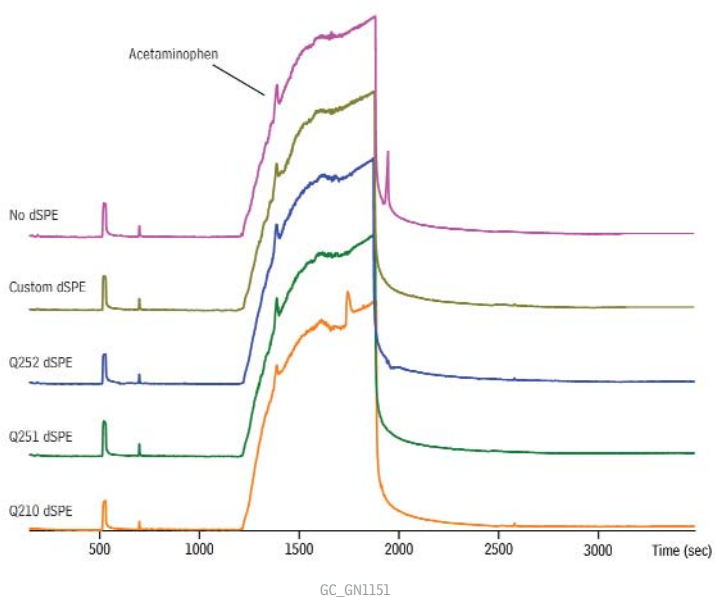


QuEChERS Extracts of Tylenol® with Different dSPE Cleanups



Column Rx1®-5Sil MS, 30 m, 0.25 mm ID, 0.25 μ m (cat.# 13623)
Sample QuEChERS extracts of Tylenol® spiked with TBA and anisoles
Diluent: Acetonitrile
Injection
 Inj. Vol.: 1 μ L splitless (hold 1 min.)
 Liner: Gooseneck Splitless (4mm) with Wool (cat.# 22405)
 Inj. Temp.: 250 °C
 Purge Flow: 40 mL/min.
Oven
 Oven Temp: 90 °C (hold 1 min.) to 310 °C at 4 °C/min. (hold 2 min.)
Carrier Gas He, constant flow
 Flow Rate: 1.2 mL/min.
 Linear Velocity: 40 cm/sec.
Detector TOFMS
Transfer
 Line Temp.: 290 °C
 Analyzer Type: TOF
 Source Temp.: 225 °C
 Electron Energy: 70 eV
 Mass Defect: -20 mu/100 u
 Solvent
 Delay Time: 2 min.
 Tune Type: PFTBA
 Ionization Mode: EI
 Acquisition Range: 45 to 550 amu
 Spectral Acquisition Rate: 5 spectra/sec
Instrument LECO Pegasus 4D GCxGC-TOFMS
Notes Q210 = PSA
 Q251 = PSA and C18
 Q252 = PSA, C18, and GCB
 Custom = PSA, C18, and less GCB
 (See Application Note GNAN1263 for complete description of spiking, extraction, and dSPE treatments.)