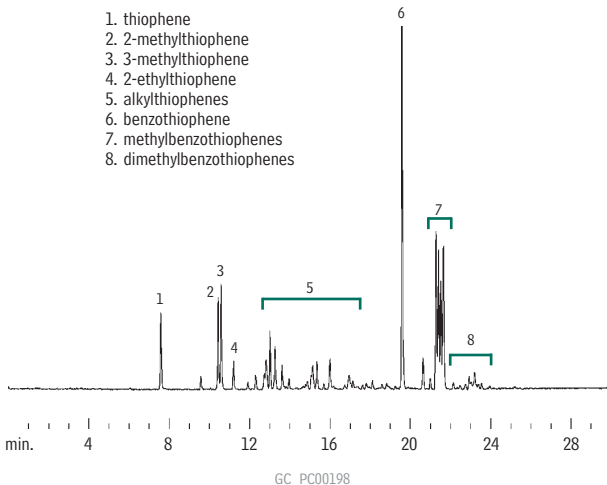


Sulfur in Gasoline Rtx[®]-1



30m, 0.32mm ID, 4.0 μ m Rtx[®]-1 (cat.# 10198)
1.0 μ L split injection of gasoline containing 300ppm total sulfur

Oven temp.: 40°C (hold 3 min.) to 275°C @ 10°C/min.
(hold 5 min.)

Inj. & det. temp.: 275°C

Det.: SCD

Carrier gas: helium

Linear velocity: 70cm/sec. (flow rate: 2.5mL/min.)

Split ratio: 10:1