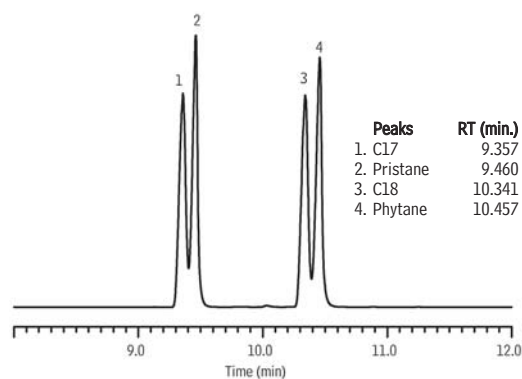


Fuel Oil Degradation Mix on Rtx®-Mineral Oil



GC_PC1166

Column Rtx®-Mineral Oil, 15 m, 0.32 mm ID, 0.15 μ m (cat.# 18074)
using IP Deactivated Guard Column 2 m, 0.53 mm ID (cat.# 10047)

Sample Fuel Oil Degradation Mix (cat.# 31240)
Diluent: methylene chloride
Conc.: 2,000 μ g/mL diluted to 500 μ g/mL

Injection
Inj. Vol.: 1 μ L cold on-column
Temp. Program: 53°C to 300°C at 10°C/min. (hold 20 min.)

Oven
Oven Temp: 50 °C to 300 °C at 10 °C/min. (hold 20 min.)

Carrier Gas H₂, constant flow
Linear Velocity: 40 cm/sec.
Dead Time: 0.625 min. @ 50 °C

Detector FID @ 330 °C

Make-up
Gas Flow Rate: 30 mL/min.
Make-up
Gas Type: N₂
Data Rate: 20 Hz

Instrument Agilent/HP6890 GC

Restek Corporation 110 Benner Circle Bellefonte, PA 16823
814-353-1300 • 800-356-1688 • Fax: 814-353-1309 • www.restek.com