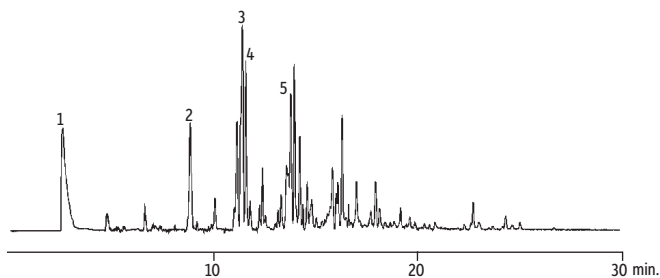


Sulfur Compounds on Rtx®-1

Peaks

- | | |
|----------------------|----------------------------|
| 1. Hydrogen sulfide | 5. 2-Ethylthiophene |
| 2. Thiophene | 6. Alkylthiophenes |
| 3. 2-Methylthiophene | 7. Benzothiophene |
| 4. 3-Methylthiophene | 8. Methylbenzothiophenes |
| | 9. Dimethylbenzothiophenes |



GC_PC1222

Column	Rtx®-1, 30 m, 0.32 mm ID, 4.00 µm (cat.# 10198)
Sample	Naphtha containing 500 ppm total sulfur compounds
Injection	
Inj. Vol.:	1 µL split (split ratio 10:1)
Inj. Temp.:	275 °C
Oven	
Oven Temp:	35 °C to 275 °C at 10 °C/min. (hold 5 min.)
Carrier Gas	He, constant linear velocity
Linear Velocity:	24 cm/sec.
Detector	Atomic emission detector (181 nm) @ 275 °C

Restek Corporation 110 Benner Circle Bellefonte, PA 16823
814-353-1300 • 800-356-1688 • Fax: 814-353-1309 • www.restek.com