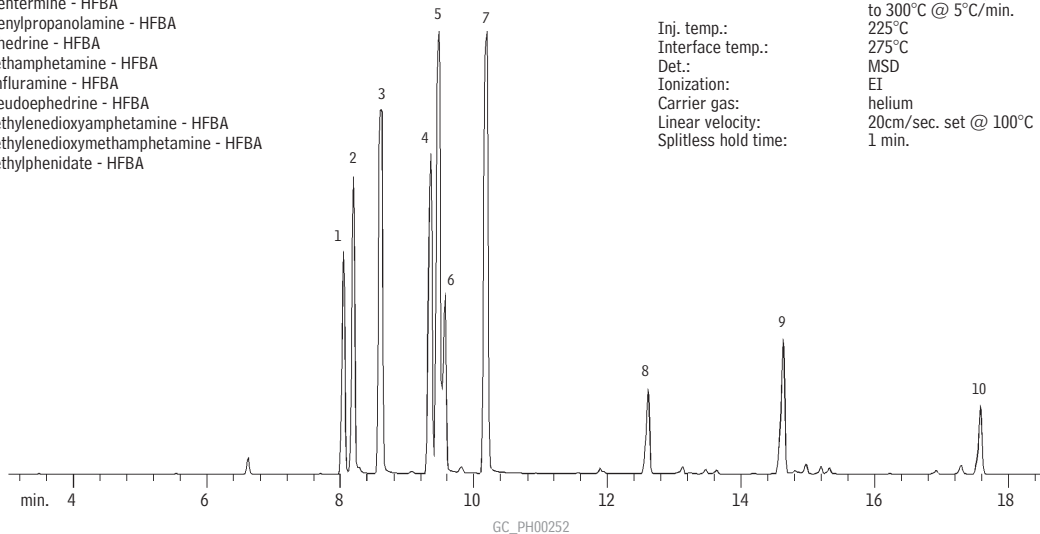


Sympathomimetic Amines (HFBA Derivatives) (Basic Drugs) Rtx®-5

1. amphetamine - HFBA
2. phentermine - HFBA
3. phenylpropanolamine - HFBA
4. ephedrine - HFBA
5. methamphetamine - HFBA
6. fenfluramine - HFBA
7. pseudoephedrine - HFBA
8. methylenedioxyamphetamine - HFBA
9. methylenedioxymethamphetamine - HFBA
10. methylphenidate - HFBA



30m, 0.25mm ID, 0.25 μ m Rtx®-5 (cat.# 10223)
1.0 μ L splitless injection of sympathomimetic amines
Conc.: approximately 2.5ng/ μ L

Oven temp.: 40°C (hold 1 min.) to 150°C @ 30°C/min.,
to 300°C @ 5°C/min.
Inj. temp.: 225°C
Interface temp.: 275°C
Det.: MSD
Ionization: EI
Carrier gas: helium
Linear velocity: 20cm/sec. set @ 100°C
Splitless hold time: 1 min.