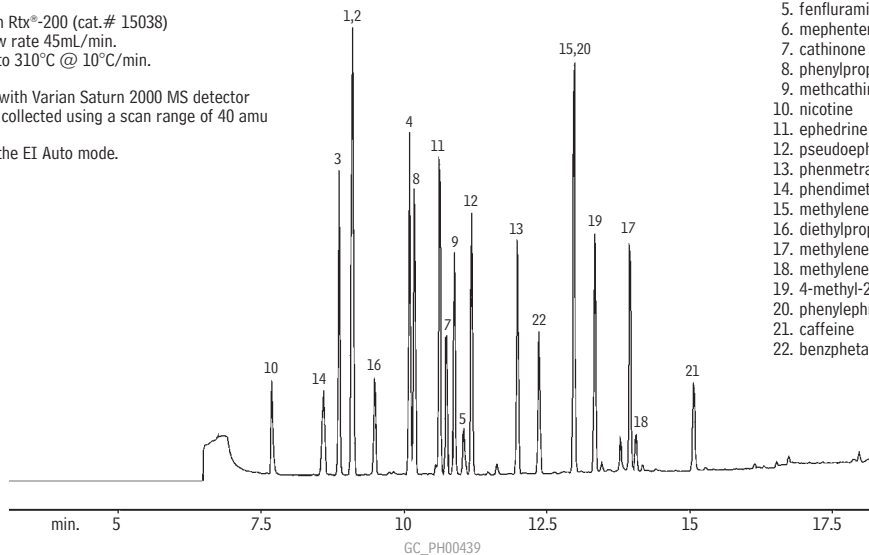


## Derivatized Sympathomimetic Amines (Basic Drugs) Rtx®-200

30m, 0.25mm ID, 0.50µm Rtx®-200 (cat.# 15038)  
split mode, split vent flow rate 45mL/min.  
Oven temp.: 100°C to 310°C @ 10°C/min.

Varian 3400 GC coupled with Varian Saturn 2000 MS detector  
Mass spectroscopy data collected using a scan range of 40 amu  
through 600 amu.  
Ionization performed in the EI Auto mode.



1. phenylethylamine
2. amphetamine
3. phentermine
4. methamphetamine
5. fenfluramine
6. mephentermine
7. cathinone
8. phenylpropanolamine
9. methcathinone
10. nicotine
11. ephedrine
12. pseudoephedrine
13. phenmetrazine
14. phendimetrazine
15. methylenedioxyamphetamine
16. diethylpropion
17. methylenedioxymethamphetamine
18. methylenedioxyethylamphetamine
19. 4-methyl-2,5-dimethoxyamphetamine
20. phenylephrine
21. caffeine
22. benzphetamine