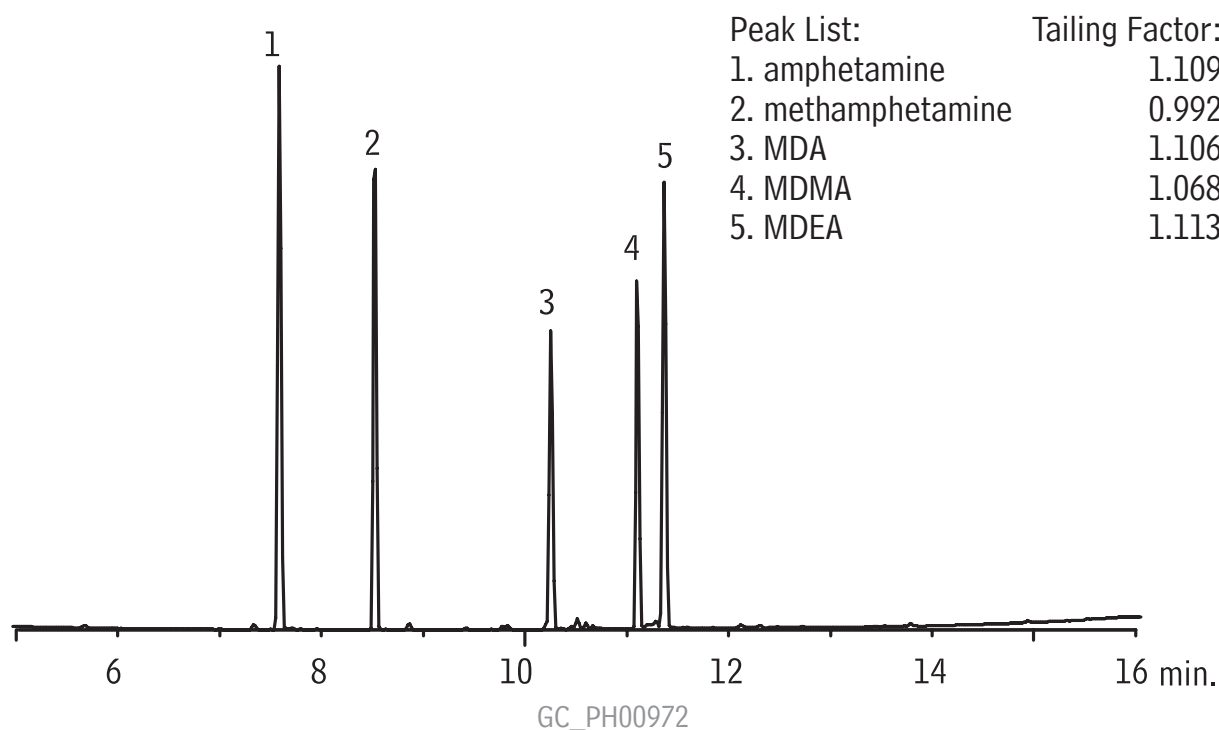


# Amphetamines

## Rtx<sup>®</sup>-5MS



Column: Rtx<sup>®</sup>-5MS, 30m, 0.25mm ID, 0.25 $\mu$ m (cat.# 12623)  
Sample: 100 $\mu$ g/mL each amphetamine, methamphetamine, MDA, MDMA, and MDEA extracted from methanol and HFAA derivatized  
Inj.: 1 $\mu$ L, splitless (hold 0.5 min.), 3.5mm custom splitless inlet liner w/IP deactivated wool  
Inj. temp.: 220 $^{\circ}$ C  
Carrier gas: helium, constant flow  
Flow rate: 1.25mL/min.  
Oven temp.: 70 $^{\circ}$ C (hold 1 min.) to 290 $^{\circ}$ C @ 15 $^{\circ}$ C/min. (hold 4 min.)  
Det: MS  
Transfer line temp.: 280 $^{\circ}$ C  
Scan range: 43-450amu  
Ionization: EI  
Mode: scan