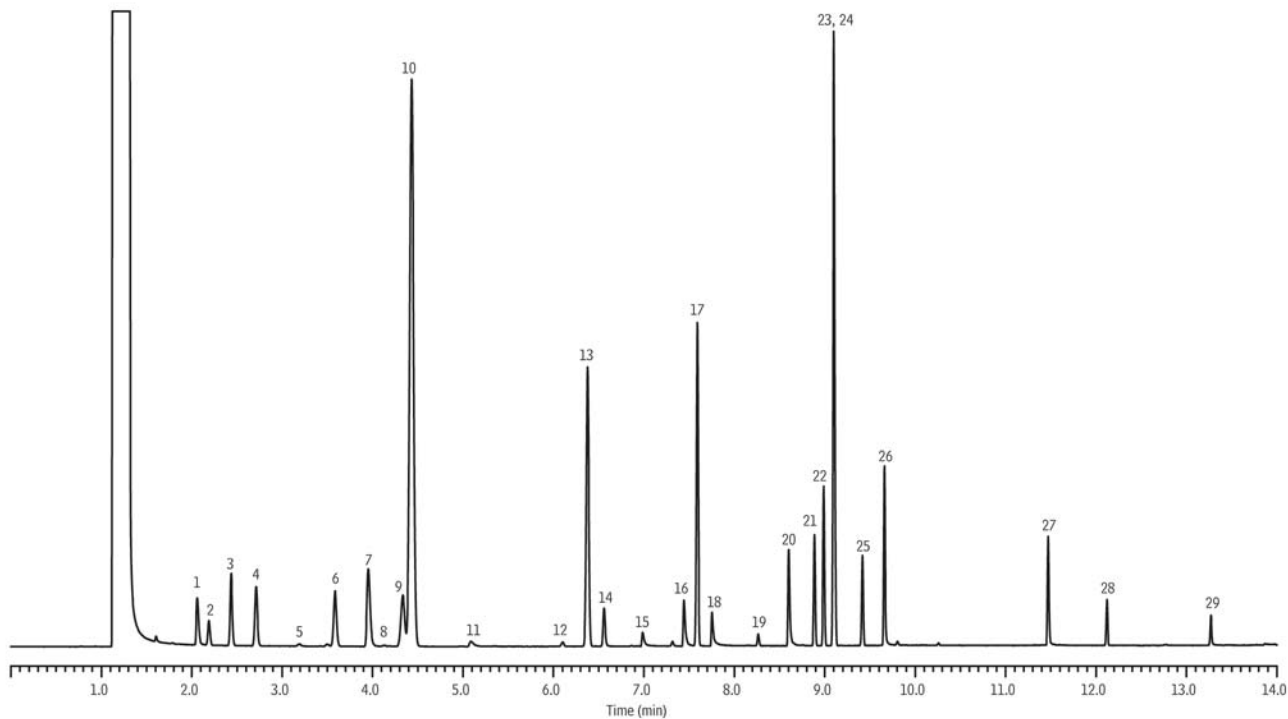


Custom Residual Solvent Mix on Rxi®-624Sil MS (using conditions from Pro ezGC)

Peaks	RT (min.)	Conc. (µg/mL)	Peaks	RT (min.)	Conc. (µg/mL)
1. Acetonitrile	2.056	410	15. 2-Ethoxyethanol	6.982	160
2. Dichloromethane	2.185	600	16. Pyridine	7.439	200
3. <i>trans</i> -1,2-Dichloroethene	2.431	940	17. Toluene	7.587	890
4. Hexane	2.707	290	18. Ethylene glycol	7.748	620
5. Nitromethane	3.497	50	19. 2-Hexanone	8.260	50
6. <i>cis</i> -1,2-Dichloroethene	3.581	940	20. Dimethylformamide	8.597	880
7. Tetrahydrofuran	3.948	690	21. Chlorobenzene	8.882	360
8. Chloroform	4.125	60	22. Ethylbenzene	8.985	368
9. 1,1,1-Trichloroethane	4.329	1,500	23. <i>p</i> -Xylene	9.096	304
10. Cyclohexane	4.427	3,880	24. <i>m</i> -Xylene	9.096	1,302
11. 2-Methoxyethanol	5.079	50	25. <i>o</i> -Xylene	9.412	196
12. Trichloroethene	6.095	80	26. N,N-Dimethylacetamide	9.654	1,090
13. Methylcyclohexane	6.373	1,180	27. 1-Methyl-2-pyrrolidone	11.466	530
14. 1,4-Dioxane	6.554	380	28. 1,2,3,4-Tetrahydronaphthalene	12.116	100
			29. Sulfolane	13.266	160



GC_PH1150

Column Rxi®-624Sil MS, 20 m, 0.18 mm ID, 1.00 µm (cat.# 13865)
Sample Custom residual solvents mix
Injection
 Inj. Vol.: 0.5 µL split (split ratio 50:1)
 Liner: 5mm split (cat.# 22973-200.1)
 Inj. Temp.: 250 °C
Oven
 Oven Temp: 40 °C (hold 5 min.) to 260 °C at 50 °C/min.
Carrier Gas He, constant flow
 Flow Rate: 1.35 mL/min.
 Linear Velocity: 45 cm/sec.
 Dead Time: 0.74 min. @ 40 °C
Detector FID @ 250 °C
 Data Rate: 50 Hz
Instrument Agilent/HP6890 GC