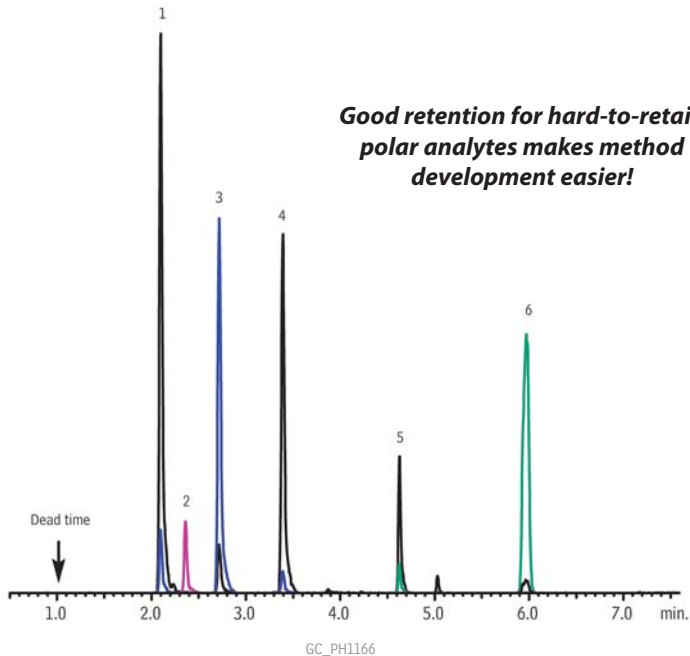


## Alkyl Halide Genotoxic Impurities on Rxi®-624Sil MS (High Conc. Injection)



Peaks	RT (min.)	Conc. (µg/mL)
1. 2-Chloropropane	2.10	1
2. Bromoethane	2.36	1
3. 1-Chloropropane	2.72	1
4. 2-Bromopropane	3.393	1
5. Butyl chloride	4.627	1
6. 1-Bromobutane	5.973	1

**Column** Rxi®-624Sil MS, 20 m, 0.18 mm ID, 1.00 µm (cat.# 13865)

**Sample**

**Diluent:** DMSO

**Conc.:** 1 µg/mL

**Injection**

**Inj. Vol.:** 1 µL splitless (hold 0.5 min.)

**Liner:** 3.5mm Single Gooseneck Liner with wool placed 3cm from top (middle) (cat.# 22286)

**Inj. Temp.:** 220 °C

**Purge Flow:** 3 mL/min.

**Oven**

**Oven Temp:** 40 °C (hold 3 min.) to 200 °C at 20 °C/min.

**Carrier Gas** He, constant flow

**Linear Velocity:** 40 cm/sec.

**Detector** MS

**Mode:** Scan

**Transfer Line Temp.:** 200 °C

**Analyzer Type:** Quadrupole

**Source Temp.:** 280 °C

**Solvent Delay Time:** 0.5 min.

**Ionization Mode:** EI

**Scan Range:** 30-300 amu

**Scan Rate:** 5 scans/sec.

**Instrument** Shimadzu 2010 GC & QP2010+ MS

**Notes:** Ions monitored 42, 43, 57, 108 m/z