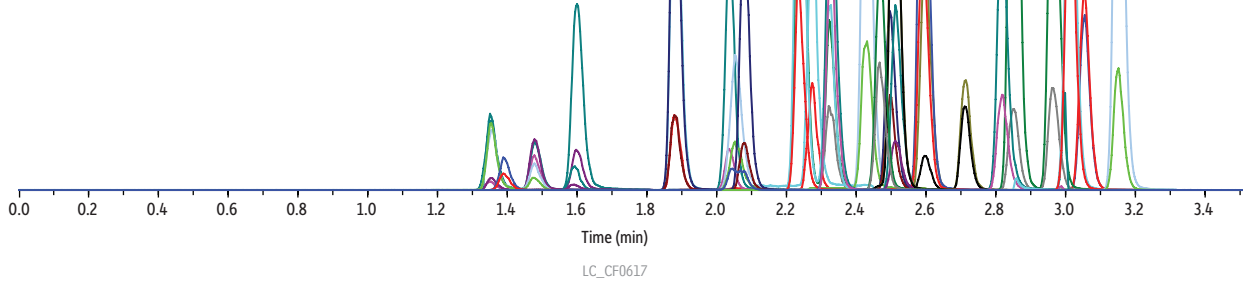


Stimulant Drug Panel on Raptor™ Biphenyl by LC-MS/MS

Peaks	tR (min)	Precursor Ion	Product Ion	Product Ion
1. Nicotine	1.35	163.2	117.1	130.1
2. Norcotinine	1.36	163.1	80.1	118.1
3. <i>trans</i> -3-Hydroxycotinine	1.41	193.1	80.0	134.0
4. Anabasine	1.50	163.2	120.1	80.1
5. Lisdexamfetamine	1.58	264.2	84.1	91.0
6. BZP	1.64	177.2	91.1	65.1
7. 1 <i>S</i> ,2 <i>R</i> -(+)-Ephedrine	1.88	166.2	148.1	115.0
8. Amphetamine	2.03	136.2	91.0	65.1
9. DMAA	2.06	116.1	57.1	99.2
10. Methylephedrine	2.08	180.2	162.0	115.1
11. Cotinine	2.15	177.2	80.0	98.1
12. Methamphetamine	2.24	150.3	91.1	119.0
13. MDA	2.28	180.1	163.1	105.2
14. Phentermine	2.33	150.2	91.1	133.1
15. Methylone	2.33	208.1	160.1	132.1
16. MDMA	2.43	194.2	163.0	135.1
17. Levamisole	2.47	205.1	178.0	91.1
18. Diethylpropion	2.50	206.2	105.1	100.1
19. <i>m</i> -Hydroxybenzoyllecgonine	2.52	306.1	168.1	121.0
20. Mephedrone	2.52	178.2	160.1	145.0
21. Ritalinic acid	2.60	220.1	84.1	56.2
22. MDEA	2.60	208.1	163.0	105.2
23. mCPP	2.72	197.1	154.0	118.1
24. Benzoyllecgonine	2.83	290.1	168.1	77.1
25. Methylphenidate	2.85	234.1	84.1	56.1
26. Cocaine	2.96	304.2	182.0	77.1
27. Norcocaine	3.02	290.1	168.0	136.1
28. MDPV	3.10	276.2	126.1	135.1
29. CoCaethylene	3.15	318.2	196.1	82.0



Column Raptor™ Biphenyl (cat.# 9309A12)
 Dimensions: 100 mm x 2.1 mm ID
 Particle Size: 2.7 μm
 Guard Column: Raptor™ Biphenyl EXP® guard column cartridge 5 mm, 2.1 mm ID, 2.7 μm (cat.# 9309A0252)
 Temp.: 30 °C

Sample
 Diluent: Water
 Conc.: 25 ng/mL
 Inj. Vol.: 5 μL

Mobile Phase
 A: Water + 0.1% formic acid + 5 mM ammonium formate
 B: Methanol + 0.1% formic acid + 5 mM ammonium formate

Time (min)	Flow (mL/min)	%A	%B
0.00	0.6	95	5
3.50	0.6	10	90
3.51	0.6	95	5
5.50	0.6	95	5

Detector MS/MS
 Ion Mode: ESI+
 Mode: Scheduled MRM
Instrument UHPLC