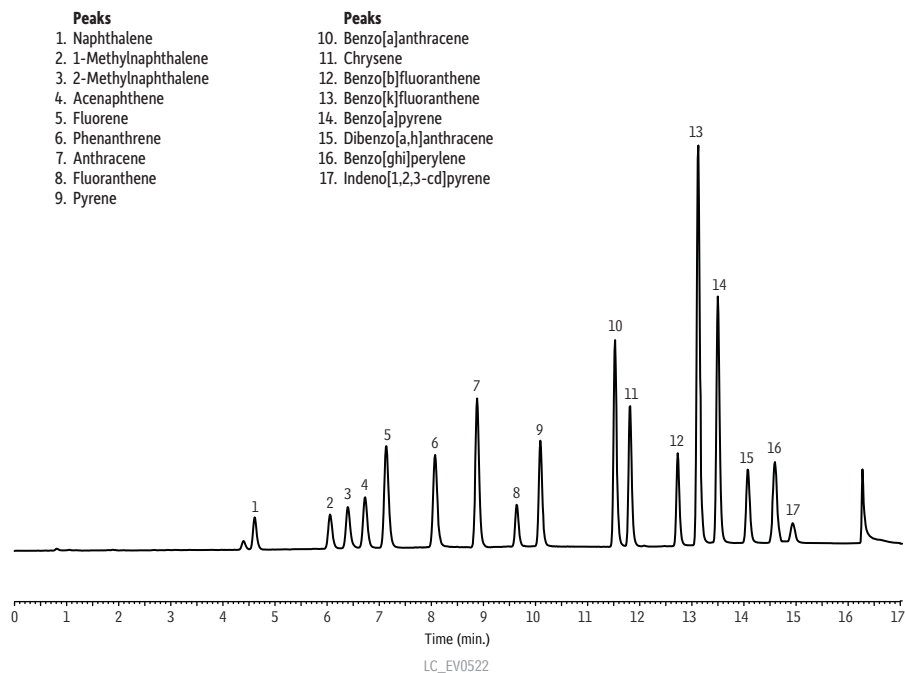


## EPA 8310 PAH Mix on Pinnacle® II PAH



- Peaks**
1. Naphthalene
  2. 1-Methylnaphthalene
  3. 2-Methylnaphthalene
  4. Acenaphthene
  5. Fluorene
  6. Phenanthrene
  7. Anthracene
  8. Fluoranthene
  9. Pyrene

- Peaks**
10. Benzo[a]anthracene
  11. Chrysene
  12. Benzo[b]fluoranthene
  13. Benzo[k]fluoranthene
  14. Benzo[a]pyrene
  15. Dibenzo[a,h]anthracene
  16. Benzo[ghi]perylene
  17. Indeno[1,2,3-cd]pyrene

**Column** Pinnacle® II PAH, custom (cat.# 921946E)  
 Dimensions: 150 mm x 3.0 mm ID  
 Particle Size: 4 µm  
 Pore Size: 110 Å  
 Temp.: 30 °C  
 Sample: EPA Method 8310 PAH Mixture (cat.# 31841)  
 Diluent: Acetonitrile  
 Conc.: 30 ng/mL (ppb)  
 Inj. Vol.: 5 µL  
**Mobile Phase**  
 A: Water  
 B: Acetonitrile

Time (min.)	Flow (mL/min.)	%A	%B
0	1.1	55	45
6.50	1.1	40	60
8.00	1.1	30	70
12.00	1.1	0	100
15.00	1.1	0	100
15.01	1.1	55	45
17.00	1.1	55	45

**Detector** Shimadzu RF-10AXL

Time (min.)	Wavelength Ex (nm)	Wavelength Em (nm)	Gain
0	270	330	16x
7.50	250	370	16x
9.20	330	430	4x
11.00	270	390	1x
12.20	290	430	1x
14.70	370	460	4x

**Instrument Notes** Shimadzu Prominence  
 RF-10AXL sensitivity: medium  
 Acenaphthylene is included in PAH standard mix (cat.# 31841) but does not fluoresce.