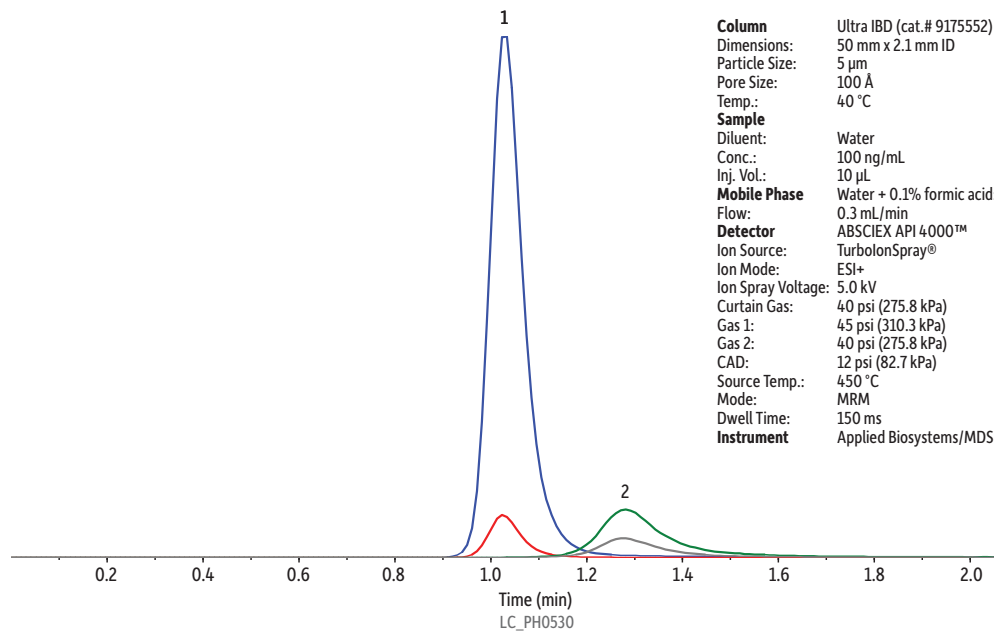


Emtricitabine and Tenofovir on Ultra IBD by LC-MS/MS

Peaks	t _R (min)	MRM 1	MRM 2
1. Emtricitabine	1.03	248.1/130.2	248.1/113.1
2. Tenofovir	1.28	288.1/176.3	288.1/159.2



Column Ultra IBD (cat.# 9175552)
Dimensions: 50 mm x 2.1 mm ID
Particle Size: 5 µm
Pore Size: 100 Å
Temp.: 40 °C
Sample
Diluent: Water
Conc.: 100 ng/mL
Inj. Vol.: 10 µL
Mobile Phase Water + 0.1% formic acid:Methanol + 0.1% formic acid (85:15)
Flow: 0.3 mL/min
Detector ABSCIEX API 4000™
Ion Source: TurbolonSpray®
Ion Mode: ESI+
Ion Spray Voltage: 5.0 kV
Curtain Gas: 40 psi (275.8 kPa)
Gas 1: 45 psi (310.3 kPa)
Gas 2: 40 psi (275.8 kPa)
CAD: 12 psi (82.7 kPa)
Source Temp.: 450 °C
Mode: MRM
Dwell Time: 150 ms
Instrument Applied Biosystems/MDS Sciex LC-MS/MS System